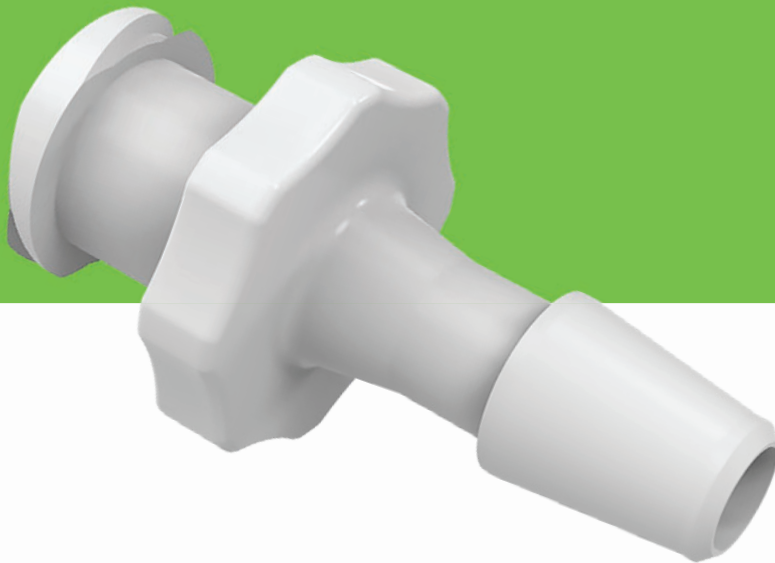


**SOFT TOUCH LUERS | WINGED LUERS | LARGE BORE LUERS  
LUER ADAPTERS | LUER LOCKS | SLIP LUERS | LUER PLUGS**



# Luers



Shop All  
Luers

# Luers

**SOFT TOUCH LUERS | WINGED LUERS | LARGE BORE LUERS  
LOCKING LUERS | ROTATING LUERS | SLIP LUERS | LUER PLUGS**

## PLASTIC LUER MEDICAL DEVICE COMPONENTS

Luer connectors are a common choice in medical and pharmaceutical industries for limited use or disposable applications where a shutoff valve is not required. The Luer taper is a standardized system of small-scale fluid fittings used for making leak-free connections between a male-taper fitting and its mating female part on medical and laboratory instruments, including hypodermic syringe tips and needles or stopcocks and needles.

We offer a selection of male Luer and female Luer fittings and connectors, lock and rotating Luer adapters, and other Luer accessories. Our Luers have been tested for dimensional and performance requirements according to ISO 594-1 and 594-2 standards.

Eldon James specializes in biomedical single-use component manufacturing, with a wide variety of PVC-free medical grade tubing, fittings, assemblies and more.

Our Luers, like many of our medical components, are produced in a state-of-the-art cleanroom facility with monitored production and quality control areas.

The benefits of PVC-free materials are well documented, and the production of all Eldon James products is not only efficient but also safe and healthy for the environment.

## ABOUT OUR NATURAL MATERIALS:

All Cleanroom Manufactured materials are ISO Class 7. *All QC items in this section are available as a Special Order.*

### CrystalVu™ (CVU)

A clear transparent alternative to polycarbonate containing no Bisphenol-A (BPA). Autoclavable with enhanced characteristics that includes: Superior chemical resistance, no crazing with multiple autoclave cycles, plus gamma and EtO Sterilization compatibility.

### Medical Nylon (MN)

Nylon, which exhibits excellent tensile strength with moderate stiffness and high impact resistance. Great for medical uses to connect multiple tubes with fuels, lubricants, and many other chemicals.

### Natural Kynar® 740 (NK7)

Offers excellent chemical resistance, inherent flame resistance, high gamma radiation resistance, good UV and weather resistance, good mechanical properties, low moisture absorption and good machinability.

### Polypropylene (PP)

Polypropylene is a very versatile material and formulated for biomedical and bioprocess applications. It is radiation stable and is resistant to solvents, chemicals, water and other inorganic environments.



**ELDON JAMES' COUPLERS ARE EMPLOYED IN AUTOMOTIVE, BEVERAGE, AND SPECIFICALLY BIO-MEDICAL INDUSTRIES.**

# Soft Touch Luers

QC =  
Cleanroom  
Manufactured

HOW TO BUILD YOUR SKU (Material Codes Key on page 188)

PRODUCT NO. [MATERIAL CODE]-[Cleanroom Manufactured(QC)]

LF-1CVU-QC



**LF-1** Female Luer • 1/16 inch Barb

**QC** CVU • MN • NK7 • PP

**LF-1.5** Female Luer • 3/32 inch Barb

**QC** CVU • MN • NK7 • PP

**LF-2** Female Luer • 1/8 inch Barb

**QC** CVU • MN • NK7 • PP

**LF-2.5** Female Luer • 5/32 inch Barb

**QC** CVU • MN • NK7 • PP

**LF-3** Female Luer • 3/16 inch Barb

**QC** CVU • MN • NK7 • PP

**LF-4** Female Luer • 1/4 inch Barb

**QC** CVU • MN • NK7 • PP



**LBF-3** Female Large Bore Luer • 3/16 inch Barb

**QC** CVU • MN • NK7 • PP

**LBF-4** Female Large Bore Luer • 1/4 inch Barb

**QC** CVU • MN • NK7 • PP

**LBF-5** Female Large Bore Luer • 5/16 inch Barb

**QC** CVU • MN • NK7 • PP

# Soft Touch Luers (CONTINUED)



**LM-1** Male Luer • 1/16 inch Barb

**QC** CVU • MN • NK7 • PP

---

**LM-1.5** Male Luer • 3/32 inch Barb

**QC** CVU • MN • NK7 • PP

---

**LM-2** Male Luer • 1/8 inch Barb

**QC** CVU • MN • NK7 • PP

---

**LM-2.5** Male Luer • 5/32 inch Barb

**QC** CVU • MN • NK7 • PP

---

**LM-3** Male Luer • 3/16 inch Barb

**QC** CVU • MN • NK7 • PP

---

**LM-4** Male Luer • 1/4 inch Barb

**QC** CVU • MN • NK7 • PP

---



**LBM-3** Male Large Bore Luer • 3/16 inch Barb

**QC** CVU • MN • NK7 • PP

---

**LBM-4** Male Large Bore Luer • 1/4 inch Barb

**QC** CVU • MN • NK7 • PP

---

**LBM-5** Male Large Bore Luer • 5/16 inch Barb

**QC** CVU • MN • NK7 • PP

# Winged Luers

QC =  
Cleanroom  
Manufactured

HOW TO BUILD YOUR SKU (Material Codes Key on page 188)

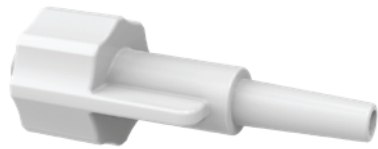
PRODUCT NO. [MATERIAL CODE]-[Cleanroom Manufactured(QC)] →

LFW-120PP-QC



**LFW-120** Female Winged Luer • .120 – .150 inch

**QC** CVU • PP



**LMW-120** Male Winged Luer • .120 – .150 inch

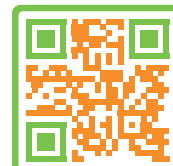
**QC** CVU • PP

**LFW-154** Female Winged Luer • .154 – .192 inch

**QC** CVU • PP

**LMW-154** Male Winged Luer • .154 – .192 inch

**QC** CVU • PP



Shop All  
Luers

# Panel Mount Luers

**QC =**  
Cleanroom  
Manufactured

HOW TO BUILD YOUR SKU (Material Codes Key on page 188)

PRODUCT NO. [MATERIAL CODE]-[Cleanroom Manufactured(QC)] → LFPM-1MN-QC



\*Available for Special Order



For color coding see  
FCR rings on page 155

How to attach:



**LFPM-1** Female Panel Mount Luer • 1/16 inch

**QC** CVU • MN • NK7\* • PP

**LFPM-1.5** Female Panel Mount Luer • 3/32 inch

**QC** CVU • MN • NK7\* • PP

**LFPM-2** Female Panel Mount Luer • 1/8 inch

**QC** CVU • MN • NK7\* • PP



\*Available for Special Order

**LFPM-RL** Female Luer Panel Mount  
to Male Rotating Luer Lock

**QC** CVU • MN • NK7\* • PP

LSLR Nut available  
on page 97



NN



PP (Transparent)

**N1428** Luer Lock Nut • 1/8 inch

**QC** NN • NN-G • NN-O • PP • WN • WP

# Luer Adapters

QC =  
Cleanroom  
Manufactured

HOW TO BUILD YOUR SKU (Material Codes Key on page 188)

PRODUCT NO. [COLOR CODE]-[Cleanroom Manufactured(QC)]



LFLCVU-QC



**A1032T-LF** Female Luer Thread to 10-32 Tapered Thread

**QC** CVU • MN • NK7 • PP

**A1032UNF-LF** Female Luer Thread to 10-32 UNF Thread

**QC** CVU • MN • NK7 • PP

**A1428UNF-LF** Female Luer Thread to 1/4-28 UNF Thread

**QC** CVU • MN • NK7 • PP



**LFL** Female Luer Elbow

**QC** CVU • MN • NK7 • PP



**LFT** Female Luer Lug Thread Tee

**QC** CVU • MN • NK7 • PP



**LF-LM** Female Luer to Male Luer

**QC** CVU • MN • NK7 • PP



**LF-C** Female Luer Coupler

**QC** CVU • MN • NK7 • PP

# Luer Locks

**QC =**  
Cleanroom  
Manufactured

HOW TO BUILD YOUR SKU (Material Codes Key on page 188)



\*Available for Special Order

**LMRLN-1** Male Rotating Luer Lock and Nut Assembly • 1/16 inch Barb

**QC** CVU • CVU-B • CVU-L • CVU-O • CVU-R • CVU-V • CVU-Y • MN • MN-B • MN-L • MN-O • MN-R • MN-V • MN-Y • PP • PP-B • PP-L • PP-O • PP-R • PP-V • PP-Y • NK7\* • NK7-B\* • NK7-L\* • NK7-O\* • NK7-R\* • NK7-V\* • NK7-Y\*

**LMRLN-1.5** Male Rotating Luer Lock and Nut Assembly • 3/32 inch Barb

**QC** CVU • CVU-B • CVU-L • CVU-O • CVU-R • CVU-V • CVU-Y • MN • MN-B • MN-L • MN-O • MN-R • MN-V • MN-Y • PP • PP-B • PP-L • PP-O • PP-R • PP-V • PP-Y • NK7\* • NK7-B\* • NK7-L\* • NK7-O\* • NK7-R\* • NK7-V\* • NK7-Y\*

**LMRLN-2** Male Rotating Luer Lock and Nut Assembly • 1/8 inch Barb

**QC** CVU • CVU-B • CVU-L • CVU-O • CVU-R • CVU-V • CVU-Y • MN • MN-B • MN-L • MN-O • MN-R • MN-V • MN-Y • PP • PP-B • PP-L • PP-O • PP-R • PP-V • PP-Y • NK7\* • NK7-B\* • NK7-L\* • NK7-O\* • NK7-R\* • NK7-V\* • NK7-Y\*

**LMRLN-2.5** Male Rotating Luer Lock and Nut Assembly • 5/32 inch Barb

**QC** CVU • CVU-B • CVU-L • CVU-O • CVU-R • CVU-V • CVU-Y • MN • MN-B • MN-L • MN-O • MN-R • MN-V • MN-Y • PP • PP-B • PP-L • PP-O • PP-R • PP-V • PP-Y • NK7\* • NK7-B\* • NK7-L\* • NK7-O\* • NK7-R\* • NK7-V\* • NK7-Y\*

**LMRLN-3** Male Rotating Luer Lock and Nut Assembly • 3/16 inch Barb

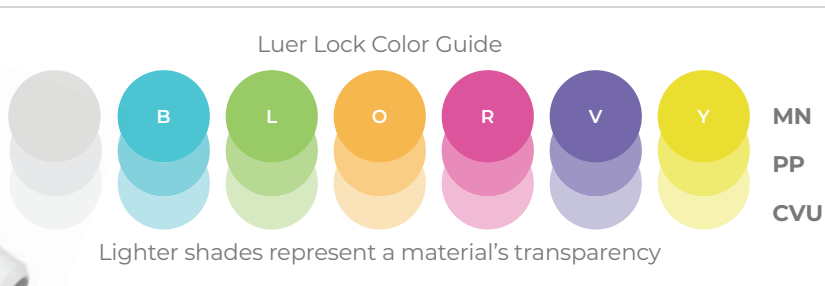
**QC** CVU • CVU-B • CVU-L • CVU-O • CVU-R • CVU-V • CVU-Y • MN • MN-B • MN-L • MN-O • MN-R • MN-V • MN-Y • PP • PP-B • PP-L • PP-O • PP-R • PP-V • PP-Y • NK7\* • NK7-B\* • NK7-L\* • NK7-O\* • NK7-R\* • NK7-V\* • NK7-Y\*

**LMRLN-4** Male Rotating Luer Lock and Nut Assembly • 1/4 inch Barb

**QC** CVU • CVU-B • CVU-L • CVU-O • CVU-R • CVU-V • CVU-Y • MN • MN-B • MN-L • MN-O • MN-R • MN-V • MN-Y • PP • PP-B • PP-L • PP-O • PP-R • PP-V • PP-Y • NK7\* • NK7-B\* • NK7-L\* • NK7-O\* • NK7-R\* • NK7-V\* • NK7-Y\*



# Luer Locks (CONTINUED)



\*Available for Special Order

## LMSLN-1 Male Stationary Luer Lock and Nut Assembly • 1/16 inch Barb

**QC** CVU • CVU-B • CVU-L • CVU-O • CVU-R • CVU-V • CVU-Y • MN • MN-B • MN-L • MN-O • MN-R • MN-V • MN-Y • PP • PP-B • PP-L • PP-O • PP-R • PP-V • PP-Y • NK7\* • NK7-B\* • NK7-L\* • NK7-O\* • NK7-R\* • NK7-V\* • NK7-Y\*

## LMSLN-1.5 Male Stationary Luer Lock and Nut Assembly • 3/32 inch Barb

**QC** CVU • CVU-B • CVU-L • CVU-O • CVU-R • CVU-V • CVU-Y • MN • MN-B • MN-L • MN-O • MN-R • MN-V • MN-Y • PP • PP-B • PP-L • PP-O • PP-R • PP-V • PP-Y • NK7\* • NK7-B\* • NK7-L\* • NK7-O\* • NK7-R\* • NK7-V\* • NK7-Y\*

## LMSLN-2 Male Stationary Luer Lock and Nut Assembly • 1/8 inch Barb

**QC** CVU • CVU-B • CVU-L • CVU-O • CVU-R • CVU-V • CVU-Y • MN • MN-B • MN-L • MN-O • MN-R • MN-V • MN-Y • PP • PP-B • PP-L • PP-O • PP-R • PP-V • PP-Y • NK7\* • NK7-B\* • NK7-L\* • NK7-O\* • NK7-R\* • NK7-V\* • NK7-Y\*

## LMSLN-2.5 Male Stationary Luer Lock and Nut Assembly • 5/32 inch Barb

**QC** CVU • CVU-B • CVU-L • CVU-O • CVU-R • CVU-V • CVU-Y • MN • MN-B • MN-L • MN-O • MN-R • MN-V • MN-Y • PP • PP-B • PP-L • PP-O • PP-R • PP-V • PP-Y • NK7\* • NK7-B\* • NK7-L\* • NK7-O\* • NK7-R\* • NK7-V\* • NK7-Y\*

## LMSLN-3 Male Stationary Luer Lock and Nut Assembly • 3/16 inch Barb

**QC** CVU • CVU-B • CVU-L • CVU-O • CVU-R • CVU-V • CVU-Y • MN • MN-B • MN-L • MN-O • MN-R • MN-V • MN-Y • PP • PP-B • PP-L • PP-O • PP-R • PP-V • PP-Y • NK7\* • NK7-B\* • NK7-L\* • NK7-O\* • NK7-R\* • NK7-V\* • NK7-Y\*

## LMSLN-4 Male Stationary Luer Lock and Nut Assembly • 1/4 inch Barb

**QC** CVU • CVU-B • CVU-L • CVU-O • CVU-R • CVU-V • CVU-Y • MN • MN-B • MN-L • MN-O • MN-R • MN-V • MN-Y • PP • PP-B • PP-L • PP-O • PP-R • PP-V • PP-Y • NK7\* • NK7-B\* • NK7-L\* • NK7-O\* • NK7-R\* • NK7-V\* • NK7-Y\*

# Luer Locks (CONTINUED)



LSLR Luer Lock Nut  
available on on the  
next page

**LMRL-1** Male Rotating Lock Luer • 1/16 inch Barb

**QC** CVU • MN • PP • NK7\*

**LMRL-1.5** Male Rotating Lock Luer • 3/32 inch Barb

**QC** CVU • MN • PP • NK7\*

**LMRL-2** Male Rotating Lock Luer • 1/8 inch Barb

**QC** CVU • MN • PP • NK7\*

**LMRL-2.5** Male Rotating Lock Luer • 5/32 inch Barb

**QC** CVU • MN • PP • NK7\*

**LMRL-3** Male Rotating Lock Luer • 3/16 inch Barb

**QC** CVU • MN • PP • NK7\*

**LMRL-4** Male Rotating Lock Luer • 1/4 inch Barb

**QC** CVU • MN • PP • NK7\*



**LF-RL** Female Luer to Male Rotating Luer Lock

**QC** CVU • MN • NK7\* • PP



**LFT-RL** Female Luer (2x) Tee to Male Rotating Luer Lock

**QC** CVU • MN • NK7\* • PP

\*Available for Special Order



# Luer Locks (CONTINUED)



**LMT-2XRL** Female Luer to Male Rotating Luer Lock (2x)

**QC** CVU • MN • NK7\* • PP



**LMSL-1** Male Stationary Lock Luer • 1/16 inch Barb

**QC** CVU • MN • PP • NK7\*

\*Available for Special Order

**LMSL-1.5** Male Stationary Lock Luer • 3/32 inch Barb

**QC** CVU • MN • PP • NK7\*

**LMSL-2** Male Stationary Lock Luer • 1/8 inch Barb

**QC** CVU • MN • PP • NK7\*

**LMSL-2.5** Male Stationary Lock Luer • 5/32 inch Barb

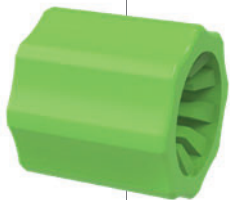
**QC** CVU • MN • PP • NK7\*

**LMSL-3** Male Stationary Lock Luer • 3/16 inch Barb

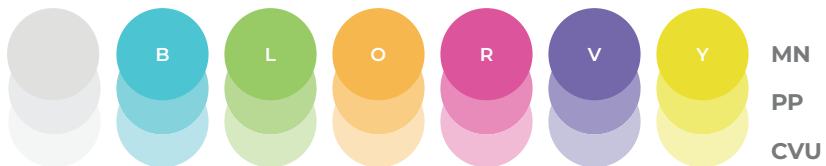
**QC** CVU • MN • PP • NK7\*

**LMSL-4** Male Stationary Lock Luer • 1/4 inch Barb

**QC** CVU • MN • PP • NK7\*



Nut Color Guide



Lighter shades represent a material's transparency

\*Available for Special Order

**LSLR** Standard Snap Luer Lock Nut

**QC** CVU • CVU-B • CVU-L • CVU-O • CVU-R • CVU-V • CVU-Y • MN • MN-B • MN-L • MN-O • MN-R • MN-V • MN-Y • PP • PP-B • PP-L • PP-O • PP-R • PP-V • PP-Y • NK7\* • NK7-B\* • NK7-L\* • NK7-O\* • NK7-R\* • NK7-V\* • NK7-Y\*

# Slip Luers

QC =  
Cleanroom  
Manufactured

HOW TO BUILD YOUR SKU (Material Codes Key on page 188)

PRODUCT NO. [MATERIAL CODE]-[Cleanroom Manufactured(QC)]

LMS-1CVU-QC



**LMS-1** Male Slip Luer • 1/16 inch Barb

**QC** CVU • MN • NK7 • PP

**LMS-1.5** Male Slip Luer • 3/32 inch Barb

**QC** CVU • MN • NK7 • PP

**LMS-2** Male Slip Luer • 1/8 inch Barb

**QC** CVU • MN • NK7 • PP

**LMS-2.5** Male Slip Luer • 5/32 inch Barb

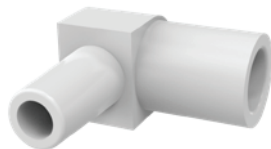
**QC** CVU • MN • NK7 • PP

**LMS-3** Male Slip Luer • 3/16 inch Barb

**QC** CVU • MN • NK7 • PP

**LMS-4** Male Slip Luer • 1/4 inch Barb

**QC** CVU • MN • NK7 • PP



**LSL** Luer Slip Elbow

**QC** CVU • MN • NK7 • PP

# Luer Plugs

**QC =**  
Cleanroom  
Manufactured

HOW TO BUILD YOUR SKU (Material Codes Key on page 188)

PRODUCT NO. [MATERIAL CODE]-[Cleanroom Manufactured(QC)]

LF-PMN-QC



**LF-P** Female Luer Plug

**QC** CVU • MN • NK7 • PP



**LM-P** Male Luer Plug

**QC** CVU • MN • NK7 • PP



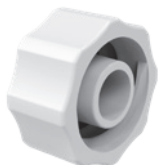
**LM-STOP** Male Luer with Stopper Plug

**QC** CVU • MN • NK7 • PP



**LBLF-P** Female Large Bore Luer Plug

**QC** CVU • MN • NK7 • PP



**LBLM-P** Male Large Bore Luer Plug

**QC** CVU • MN • NK7 • PP

# Luer Plugs (CONTINUED)



**LMSL-P** Locking Luer Plug

**QC** CVU • MN • NK7\* • PP

---



**LMRL-P** Rotating Luer Plug

**QC** CVU • MN • NK7\* • PP

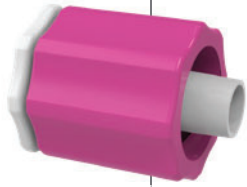
---



**LMS-P** Male Slip Luer Plug

**QC** CVU • MN • NK7 • PP

# Luer Plugs (CONTINUED)



Nut Assembly Color Guide

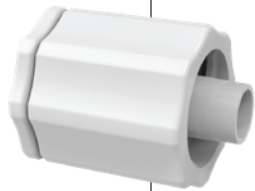
							MN
							PP
							CVU

Lighter shades represent a material's transparency

\*Available for Special Order

## **LMRLN-P** Rotating Luer Lock Plug and Nut Assembly

**QC** CVU • CVU-B • CVU-L • CVU-O • CVU-R • CVU-V • CVU-Y • MN • MN-B • MN-L • MN-O • MN-R • MN-V • MN-Y • PP • PP-B • PP-L • PP-O • PP-R • PP-V • PP-Y • NK7\* • NK7-B\* • NK7-L\* • NK7-O\* • NK7-R\* • NK7-V\* • NK7-Y\*



Nut Assembly Color Guide

							MN
							PP
							CVU

Lighter shades represent a material's transparency

\*Available for Special Order

## **LMSLN-P** Stationary Luer Lock Plug and Nut Assembly

**QC** CVU • CVU-B • CVU-L • CVU-O • CVU-R • CVU-V • CVU-Y • MN • MN-B • MN-L • MN-O • MN-R • MN-V • MN-Y • PP • PP-B • PP-L • PP-O • PP-R • PP-V • PP-Y • NK7\* • NK7-B\* • NK7-L\* • NK7-O\* • NK7-R\* • NK7-V\* • NK7-Y\*



# Tethered Luer Plugs

QC =  
Cleanroom  
Manufactured

HOW TO BUILD YOUR SKU (Material Codes Key on page 188)

PRODUCT NO. [MATERIAL CODE]-[Cleanroom Manufactured(QC)]

LMS-P-PTPP-QC



**LMS-P-PT** Male Tethered Slip Luer Plug

**QC** NK7 • PP



**LF-P-PT** Female Tethered Luer Plug

**QC** NK7 • PP



**LM-P-PT** Male Tethered Luer Plug

**QC** NK7 • PP



**LBLF-P-PT** Female Tethered Large Bore Luer Plug

**QC** NK7 • PP



**LBLM-P-PT** Male Tethered Large Bore Luer Plug

**QC** NK7 • PP