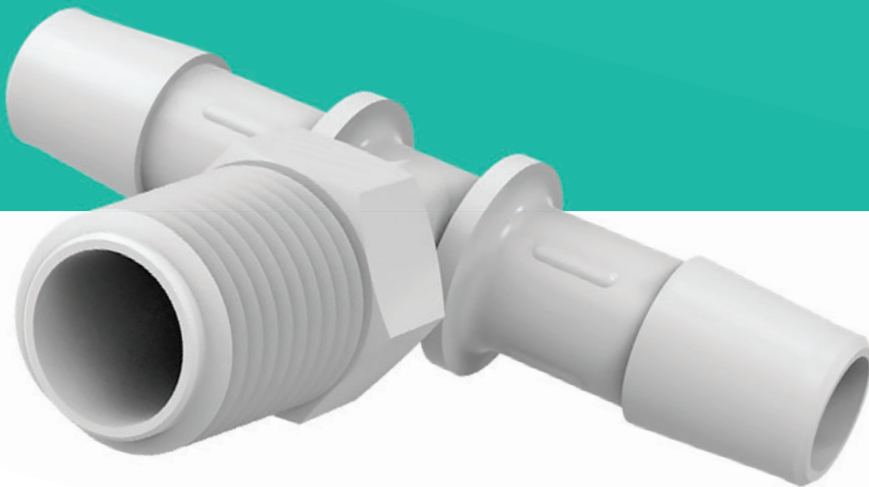
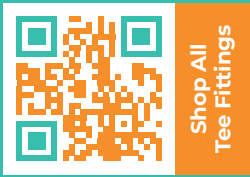


EQUAL TEES | REDUCTION TEES
THREADED TEES | BRITISH THREADED TEES

Tee Fittings





Tee Fittings

EQUAL TEES | REDUCTION TEES THREADED TEES | BRITISH THREADED TEES

Eldon James offers PVC-free tee fittings and connectors that are safer, tougher, and better than their plastic alternatives.

All Eldon James connectors and tubing are PVC-free, DEHP/BPA-free, and we offer antimicrobial fittings for the critical applications to protect against the threat of bacteria and biofilm formation.

Great for use across many industries, including the beverage, food, medical, industrial and automotive areas, our tee fittings are available from 1/16" to 1" barb to custom fit your needs. British threaded tee fittings are also available and our connectors are compatible with many metric sized hoses and tubes.

Eldon James has further revolutionized the tee fitting industry through our innovative single barb fitting style which offers unmatched benefits, including:

- A single barb design with no mold parting line, which prevents the “leak path” created by parting lines on typical barb connectors.
- An anti-rotation device located on the barb shaft prevents the tubing from rotating or twisting on the tee fitting.
- Clean, functional design has no protruding sharp edges, boxed corners, or excess material that can be detrimental to tubing.

ABOUT OUR NATURAL MATERIALS:

All Cleanroom Manufactured materials are ISO Class 7. *All QC items in this section are available as a Special Order.*

Medical Nylon (MN)

Nylon, which exhibits excellent tensile strength with moderate stiffness and high impact resistance. Great for medical uses to connect multiple tubes with fuels, lubricants, and many other chemicals.

Natural Nylon (NN)

Natural Nylon exhibits excellent tensile strength with moderate stiffness and high impact resistance. Great for automotive and industrial use with fuels, lubricants, and many chemicals.

Natural Kynar® 740 (NK7)

Offers excellent chemical resistance, inherent flame resistance, high gamma radiation resistance, good UV and weather resistance, good mechanical properties, low moisture absorption and good machinability.

Polypropylene (PP)

Polypropylene is a very versatile material and formulated for biomedical and bioprocess applications. It is radiation stable and is resistant to solvents, chemicals, water and other inorganic environments.



ELDON JAMES' FITTINGS ARE EMPLOYED ACROSS MANY INDUSTRIES, INCLUDING BEVERAGE, FOOD, MEDICAL, INDUSTRIAL AND AUTOMOTIVE.

Equal Tees

QC =
Cleanroom
Manufactured

HOW TO BUILD YOUR SKU (Material Codes Key on page 188)

PRODUCT NO. [MATERIAL CODE]-[Cleanroom Manufactured(QC)]

→ T0-1-200MN-QC



T0-1-200 Equal Tee • 1/16 inch Barb

AC • BN • NK7 • NN • PP • PVDF • WN • WP **QC** MN • NK7 • PP

T0-1.5-200 Equal Tee • 3/32 inch Barb

AC • BN • NK7 • NN • PP • PVDF • WN • WP **QC** MN • NK7 • PP

T0-2-200 Equal Tee • 1/8 inch Barb

AC • BN • NK7 • NN • PP • PVDF • WN • WP **QC** MN • NK7 • PP

T0-2 Equal Tee • 1/8 inch Barb

SS

T0-2.5 Equal Tee • 5/32 inch Barb

AC • BN • GFBN • NK7 • NN • PP • PVDF • SS • WN • WP **QC** MN • NK7 • PP

T0-3 Equal Tee • 3/16 inch Barb

AC • BN • GFBN • NK7 • NN • PP • PVDF • SS • WN • WP **QC** MN • NK7 • PP

T0-4 Equal Tee • 1/4 inch Barb

AC • BN • GFBN • NK7 • NN • PP • PVDF • SS • WN • WP **QC** MN • NK7 • PP

T0-5 Equal Tee • 5/16 inch Barb

AC • BN • GFBN • NK7 • NN • PP • PVDF • SS • WN • WP **QC** MN • NK7 • PP

Equal Tees (CONTINUED)



T0-6 Equal Tee • 3/8 inch Barb

AC • BN • GFBN • NK7 • NN • PC • PP • PVDF • SS • WN • WP **QC** MN • NK7 • PP

T0-8 Equal Tee • 1/2 inch Barb

AC • BN • GFBN • NK7 • NN • PP • PVDF • SS • WN • WP **QC** MN • NK7 • PP

T0-10 Equal Tee • 5/8 inch Barb

BN • GFBN • NK7 • NN • PP • PVDF • SS • WN • WP **QC** MN • NK7 • PP

T0-12 Equal Tee • 3/4 inch Barb

BN • GFBN • NK7 • NN • PP • PVDF • SS • WN • WP **QC** MN • NK7 • PP

T0-16 Equal Tee • 1 inch Barb

BN • GFBN • NK7 • NN • PP • PVDF • WN • WP **QC** MN • NK7 • PP



316L Stainless Steel



Shop All Tee Fittings

Reduction Tees

QC =
Cleanroom
Manufactured

HOW TO BUILD YOUR SKU (Material Codes Key on page 188)

PRODUCT NO. [MATERIAL CODE]-[Cleanroom Manufactured(QC)]

RT2-1-200MN-QC



LRT4-1.5-200 Asymmetric Tee • 1/4 x 1/4 x 3/32 inch Barb

GFBN • MN • NK7 • NN • PP • WN

LRT4-3-200 Asymmetric Tee • 1/4 x 1/4 x 3/16 inch Barb

GFBN • MN • NK7 • NN • PP • WN

LRT6-12 Asymmetric Tee • 3/8 x 3/8 x 3/4 inch Barb

GFBN • MN • NK7 • NN • PP • WN



RT1-1.5-200 Reduction Tee • 1/16 x 3/32 inch Barb

BN • NK7 • NN • PP **QC** MN • NK7 • PP

RT1-2-200 Reduction Tee • 1/16 x 1/8 inch Barb

BN • NK7 • NN • PP **QC** MN • NK7 • PP

RT2-1-200 Reduction Tee • 1/8 x 1/16 inch Barb

NK7 • NN • PP **QC** MN • NK7 • PP

RT2-1.5-200 Reduction Tee • 1/8 x 3/32 inch Barb

BN • NK7 • NN • PP **QC** MN • NK7 • PP

RT2-2.5-200 Reduction Tee • 1/8 x 5/32 inch Barb

BN • NK7 • NN • PP **QC** MN • NK7 • PP

RT2-3-200 Reduction Tee • 1/8 x 3/16 inch Barb

NK7 • NN • PP **QC** MN • NK7 • PP

RT2-4-200 Reduction Tee • 1/8 x 1/4 inch Barb

BN • NK7 • NN • PP • WN **QC** MN • NK7 • PP

Reduction Tees (CONTINUED)

**RT2-5** Reduction Tee • 1/8 x 5/16 inch Barb

SS

RT2.5-6 Reduction Tee • 5/32 x 3/8 inch BarbBN • GFBN • NK7 • NN • PP • PVDF • WN • WP **QC** MN • NK7 • PP**RT4-1.5-200** Reduction Tee • 1/4 x 3/32 inch BarbNK7 • NN • PP **QC** MN • NK7 • PP**RT4-2-200** Reduction Tee • 1/4 x 1/8 inch BarbBN • NK7 • NN • PP • WP **QC** MN • NK7 • PP**RT4-3-200** Reduction Tee • 1/4 x 3/16 inch BarbBN • NK7 • NN • PP • WP **QC** MN • NK7 • PP**RT4-6** Reduction Tee • 1/4 x 3/8 inch BarbBN • GFBN • NK7 • NN • PP • PVDF • WN • WP **QC** MN • NK7 • PP**RT4-10** Reduction Tee • 1/4 x 5/8 inch BarbBN • GFBN • NK7 • NN • PP • PVDF • WN • WP **QC** MN • NK7 • PP**RT6-2.5** Reduction Tee • 3/8 x 5/32 inch BarbBN • GFBN • NK7 • NN • PP • PVDF • WN • WP **QC** MN • NK7 • PP**RT6-4** Reduction Tee • 3/8 x 1/4 inch BarbBN • GFBN • NK7 • NN • PP • PVDF • SS • WN • WP **QC** MN • NK7 • PP**RT6-5** Reduction Tee • 3/8 x 5/16 inch Barb

SS

RT6-10 Reduction Tee • 3/8 x 5/8 inch BarbBN • GFBN • NK7 • NN • PP • PVDF • WN • WP **QC** MN • NK7 • PP**RT8-4** Reduction Tee • 1/2 x 1/4 inch BarbBN • GFBN • NK7 • NN • PP • PVDF • WN • WP **QC** MN • NK7 • PP**RT8-5** Reduction Tee • 1/2 x 5/16 inch BarbBN • GFBN • NK7 • NN • PP • PVDF • SS • WN • WP **QC** MN • NK7 • PP**RT8-6** Reduction Tee • 1/2 x 3/8 inch BarbBN • GFBN • NK7 • NN • PP • PVDF • WN • WP **QC** MN • NK7 • PP

Reduction Tees (CONTINUED)

**RT10-5** Reduction Tee • 5/8 x 5/16 inch BarbAC • BN • GFBN • NK7 • NN • PP • PVDF • SS • WN • WP **QC** MN • NK7 • PP**RT10-6** Reduction Tee • 5/8 x 3/8 inch BarbBN • GFBN • NK7 • NN • PP • PVDF • SS • WN • WP **QC** MN • NK7 • PP**RT12-6** Reduction Tee • 3/4 x 3/8 inch BarbBN • GFBN • NK7 • NN • PP • PVDF • WN • WP **QC** MN • NK7 • PP**RT12-8** Reduction Tee • 3/4 x 1/2 inch BarbBN • GFBN • NK7 • NN • PP • PVDF • WN • WP **QC** MN • NK7 • PP**RT12-10** Reduction Tee • 3/4 x 5/8 inch BarbBN • GFBN • NK7 • NN • PP • PVDF • WN • WP **QC** MN • NK7 • PP**RT12-16** Reduction Tee • 3/4 x 1 inch BarbGFBN **QC** NK7 • PP**RT16-8** Reduction Tee • 1 x 1/2 inch BarbBN • GFBN • NK7 • NN • PP • PVDF • WN • WP **QC** MN • NK7 • PP**RT16-10** Reduction Tee • 1 x 5/8 inch BarbBN • GFBN • NK7 • NN • PP • PVDF • WN • WP **QC** MN • NK7 • PP**RT16-12** Reduction Tee • 1 x 3/4 inch BarbGFBN **QC** NK7 • PP**RT20-12** Reduction Tee • 1-1/4 x 3/4 inch Barb**QC** NK7 • PP**RT24-14** Reduction Tee • 1-3/4 x 7/8 inch Barb**QC** NK7 • PP**RT28-14** Reduction Tee • 1-3/4 x 7/8 inch Barb**QC** NK7 • PP**RT28-16** Reduction Tee • 1-3/4 x 1 inch Barb**QC** NK7 • PP

Threaded Tees

QC =
Cleanroom
Manufactured

HOW TO BUILD YOUR SKU (Material Codes Key on page 188)

PRODUCT NO. [MATERIAL CODE]-[Cleanroom Manufactured(QC)]

T2-2MN-QC



T2-2 Threaded Tee • 1/8 inch NPT – 1/8 inch Barb

AC • BN • GFBN • NK7 • NN • PP • PVDF • WN • WP **QC** MN • NK7 • PP

T2-2.5 Threaded Tee • 1/8 inch NPT – 5/32 inch Barb

BN • GFBN • NK7 • NN • PP • PVDF • WN • WP **QC** MN • NK7 • PP

T2-3 Threaded Tee • 1/8 inch NPT – 3/16 inch Barb

BN • GFBN • NK7 • NN • PP • PVDF • WN • WP **QC** MN • NK7 • PP

T2-4 Threaded Tee • 1/8 inch NPT – 1/4 inch Barb

BN • GFBN • NK7 • NN • PP • PVDF • WN • WP **QC** MN • NK7 • PP

T2-5 Threaded Tee • 1/8 inch NPT – 5/16 inch Barb

BN • GFBN • NK7 • NN • PP • PVDF • WN • WP **QC** MN • NK7 • PP

T2-6 Threaded Tee • 1/8 inch NPT – 3/8 inch Barb

BN • GFBN • NK7 • NN • PP • PVDF • WN • WP **QC** MN • NK7 • PP

T4-2 Threaded Tee • 1/4 inch NPT – 1/8 inch Barb

BN • GFBN • NK7 • NN • PP • PVDF • WN • WP **QC** MN • NK7 • PP

T4-2.5 Threaded Tee • 1/4 inch NPT – 5/32 inch Barb

BN • GFBN • NK7 • NN • PP • PVDF • WN • WP **QC** MN • NK7 • PP

Threaded Tees (CONTINUED)

T4-3 Threaded Tee • 1/4 inch NPT – 3/16 inch BarbBN • GFBN • NK7 • NN • PP • PVDF • WN • WP **QC** MN • NK7 • PP**T4-4 Threaded Tee • 1/4 inch NPT – 1/4 inch Barb**BN • GFBN • NK7 • NN • PP • PVDF • WN • WP **QC** MN • NK7 • PP**T4-5 Threaded Tee • 1/4 inch NPT – 5/16 inch Barb**BN • GFBN • NK7 • NN • PP • PVDF • WN • WP **QC** MN • NK7 • PP**T4-6 Threaded Tee • 1/4 inch NPT – 3/8 inch Barb**BN • GFBN • NK7 • NN • PP • PVDF • WN • WP **QC** MN • NK7 • PP**T4-8 Threaded Tee • 1/4 inch NPT – 1/2 inch Barb**BN • GFBN • NK7 • NN • PP • PVDF • WN • WP **QC** MN • NK7 • PP**T6-4 Threaded Tee • 3/8 inch NPT – 1/4 inch Barb**BN • GFBN • NK7 • NN • PP • PVDF • WN • WP **QC** MN • NK7 • PP**T6-5 Threaded Tee • 3/8 inch NPT – 5/16 inch Barb**BN • GFBN • NK7 • NN • PP • PVDF • WN • WP **QC** MN • NK7 • PP**T6-6 Threaded Tee • 3/8 inch NPT – 3/8 inch Barb**BN • GFBN • NK7 • NN • PP • PVDF • WN • WP **QC** MN • NK7 • PP**T6-8 Threaded Tee • 3/8 inch NPT – 1/2 inch Barb**BN • GFBN • NK7 • NN • PP • PVDF • WN • WP **QC** MN • NK7 • PP**T8-4 Threaded Tee • 1/2 inch NPT – 1/4 inch Barb**BN • GFBN • NK7 • NN • PP • PVDF • WN • WP **QC** MN • NK7 • PP**T8-6 Threaded Tee • 1/2 inch NPT – 3/8 inch Barb**BN • GFBN • NK7 • NN • PP • PVDF • WN • WP **QC** MN • NK7 • PP

Threaded Tees (CONTINUED)



T8-8 Threaded Tee • 1/2 inch NPT – 1/2 inch Barb

BN • GFBN • NK7 • NN • PP • PVDF • WN • WP **QC** MN • NK7 • PP

T8-10 Threaded Tee • 1/2 inch NPT – 5/8 inch Barb

BN • GFBN • NK7 • NN • PP • PVDF • WN • WP **QC** MN • NK7 • PP

T8-12 Threaded Tee • 1/2 inch NPT – 3/4 inch Barb

BN • GFBN • NK7 • NN • PP • PVDF • WN • WP **QC** MN • NK7 • PP

T12-4 Threaded Tee • 3/4 inch NPT – 1/4 inch Barb

BN • GFBN • NK7 • NN • PP • PVDF • WN • WP **QC** MN • NK7 • PP

T12-6 Threaded Tee • 3/4 inch NPT – 3/8 inch Barb

BN • GFBN • NK7 • NN • PP • PVDF • WN • WP **QC** MN • NK7 • PP

T12-8 Threaded Tee • 3/4 inch NPT – 1/2 inch Barb

BN • GFBN • NK7 • NN • PP • PVDF • WN • WP **QC** MN • NK7 • PP

T12-10 Threaded Tee • 3/4 inch NPT – 5/8 inch Barb

BN • GFBN • NK7 • NN • PP • PVDF • WN • WP **QC** MN • NK7 • PP

T12-12 Threaded Tee • 3/4 inch NPT – 3/4 inch Barb

BN • GFBN • NK7 • NN • PP • PVDF • WN • WP **QC** MN • NK7 • PP

T12-16 Threaded Tee • 3/4 inch NPT – 1 inch Barb

BN • GFBN • NK7 • NN • PP • PVDF • WN • WP **QC** MN • NK7 • PP

T16-12 Threaded Tee • 1 inch NPT – 3/4 inch Barb

BN • GFBN • NK7 • NN • PP • PVDF • WN • WP **QC** MN • NK7 • PP

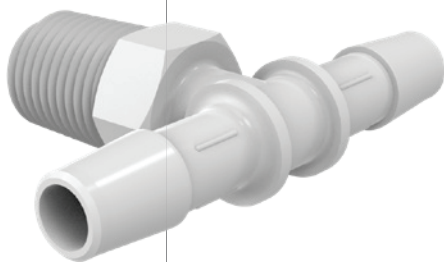
T16-16 Threaded Tee • 1 inch NPT – 1 inch Barb

BN • GFBN • NK7 • NN • PP • PVDF • WN • WP **QC** MN • NK7 • PP

British Threaded Tees

HOW TO BUILD YOUR SKU (Material Codes Key on page 188)

PRODUCT NO. [MATERIAL CODE] → T2B-2.5NN



BSPT threads utilize the Whitworth thread form, which is designed to provide a pressure-tight fit through mating of the threads. This is accomplished by cutting the threads on a taper. Because they are tapered, the thread can only screw into the companion female thread a certain distance before it jams. The standard specifies this distance as a length based on hand-tight engagement; a convenient rule-of-thumb for plastic threads is: finger-tight plus 1/2 to 1 turn with a wrench. Do not over-tighten plastic threads – stress on the fitting can result in its failure.

T2B-2.5 British Threaded Tees • 1/8 inch BSPT – 5/32 inch Barb

BN · GFBN · NK7 · NN · PP · PVDF · WN · WP

T2B-4 British Threaded Tees • 1/8 inch BSPT – 1/4 inch Barb

BN · GFBN · NK7 · NN · PP · PVDF · WN · WP

T2B-6 British Threaded Tees • 1/8 inch BSPT – 3/8 inch Barb

BN · GFBN · NK7 · NN · PP · PVDF · WN · WP

T4B-2.5 British Threaded Tees • 1/4 inch BSPT – 5/32 inch Barb

BN · GFBN · NK7 · NN · PP · PVDF · WN · WP

T4B-3 British Threaded Tees • 1/4 inch BSPT – 3/16 inch Barb

BN · GFBN · NK7 · NN · PP · PVDF · WN · WP

T4B-4 British Threaded Tees • 1/4 inch BSPT – 1/4 inch Barb

BN · GFBN · NK7 · NN · PP · PVDF · WN · WP

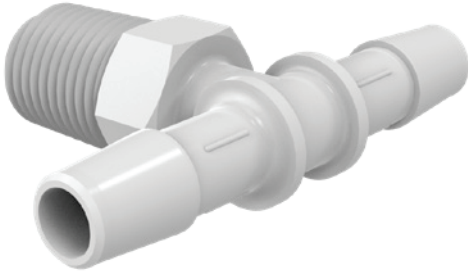
T4B-5 British Threaded Tees • 1/4 inch BSPT – 5/16 inch Barb

BN · GFBN · NK7 · NN · PP · PVDF · WN · WP

T4B-6 British Threaded Tees • 1/4 inch BSPT – 3/8 inch Barb

BN · GFBN · NK7 · NN · PP · PVDF · WN · WP

British Threaded Tees (CONTINUED)



T4B-8 British Threaded Tees • 1/4 inch BSPT – 1/2 inch Barb

BN • GFBN • NK7 • NN • PP • PVDF • WN • WP

T6B-4 British Threaded Tees • 3/8 inch BSPT – 1/4 inch Barb

BN • GFBN • NK7 • NN • PP • PVDF • WN • WP

T6B-5 British Threaded Tees • 3/8 inch BSPT – 5/16 inch Barb

BN • GFBN • NK7 • NN • PP • PVDF • WN • WP

T6B-6 British Threaded Tees • 3/8 inch BSPT – 3/8 inch Barb

BN • GFBN • NK7 • NN • PP • PVDF • WN • WP

T6B-8 British Threaded Tees • 3/8 inch BSPT – 1/2 inch Barb

BN • GFBN • NK7 • NN • PP • PVDF • WN • WP



Shop All
Tee Fittings