



# Move to Metro tray drying solutions.



## Metro® drying solutions provide maximum density, airflow, and eliminates abrasion.

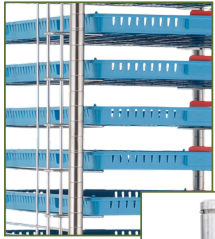
The Metro Tray Drying Racks in type 304 stainless steel offers superior air flow, mobility, affordability, and corrosion resistance. Easily cleanable, this high density solution stands up to all environments within modern medicinal and recreational cannabis grow facilities. 3" wire spacing allowing the density for processing large amounts of product while providing ample airflow for a consistent uniform dry time. Accommodates up to 20 standard 18"x26" trays.



Accommodates all styles of drying.  
Hang or tray dry... it's your call.



A lifetime solution for harsh environments.



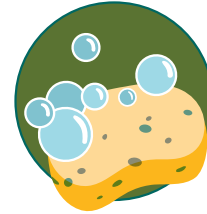
Rust-free processing at every level. Stainless steel wire slides withstand all corrosive cleaning agents.



Easy-to-clean rust proof casters keep rolling. Safe for use in all cleaning machines.



Easy to clean.



Resistant to all harsh cleaning agents.

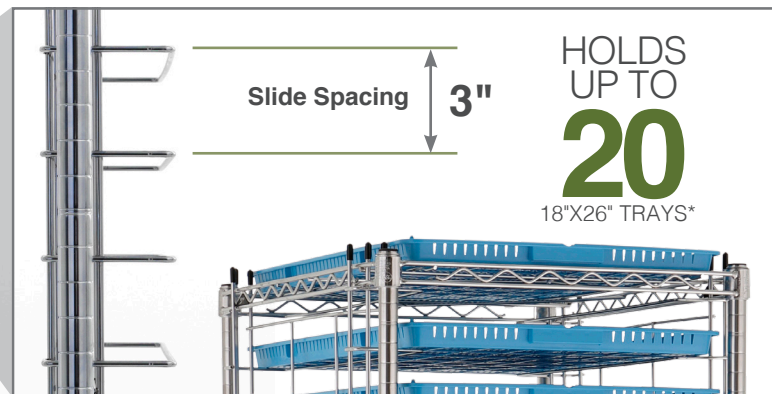
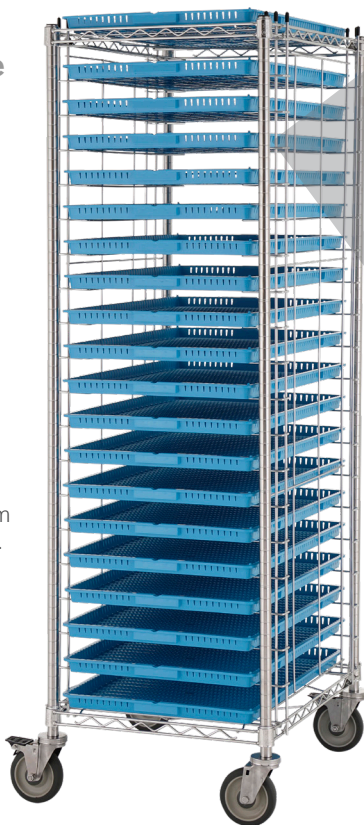
# Safe & tough.

Best Practice

Load from top down.



Unload from bottom up.



Maximum density & airflow.

Dimensions are for an unloaded cart designed for bottom loading 18"x26" trays. 200 lb. unit weight capacity with up to 30 lbs. per level.

Cat. No.	Description	Dimensions (W x D)		Approx. Pkd. Wt.
		(in)	(mm)	
RE3S	Stainless Steel Front-Load Tray Rack	21.75 x 27	522 x 685	70 lbs. (31.8 kg)

Height 69" with Casters. Weight Load Capacity: 30 lbs. (13.6kg) per level; 200 lbs. (91kg) per rack.

\* Includes utilizing top of rack.



We put space to work.

LO9-021

© 2020 InterMetro Industries Corporation, Wilkes-Barre, PA 18705

an Ali Group Company



The Spirit of Excellence