

# MetroMax® Enclosure Panels

Assembly  
 Videos



MetroMax i



MetroMax 4

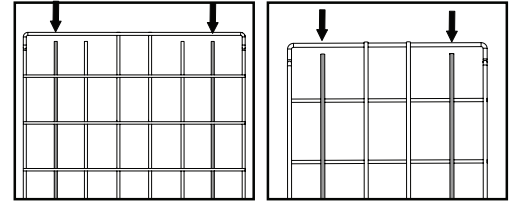


MetroMax Q

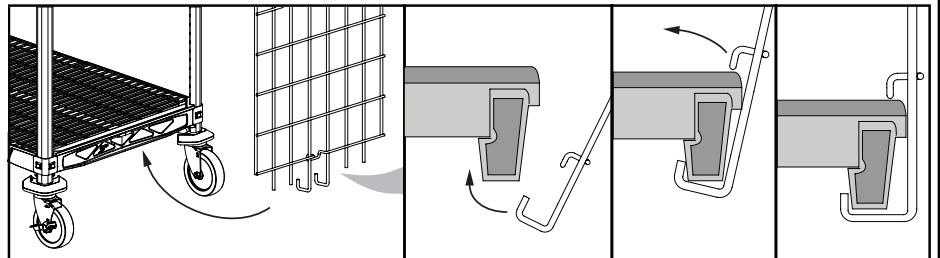
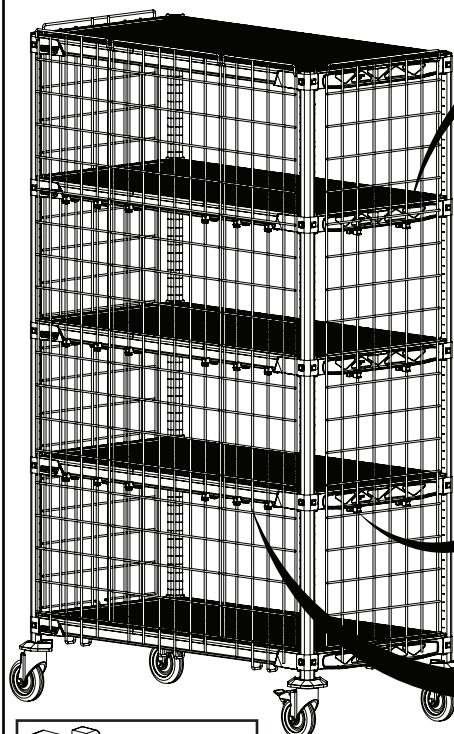
Ends (shelf width) Extrémités (largeur de l'étagère) Extremos (ancho de estante)				Panels required for Back (shelf length) Panneaux nécessaires pour l'arrière (longueur de panneau) Paneles posteriores necesarios (largo de estante)							
Post Montant Poste	14" / 18" 355mm / 457mm	21" 530mm	24" 610mm	Post Montant Poste	30" 760mm	36" 914mm	42" 1066mm	48" 1219mm	54" 1370mm	60" 1524mm	72" 1825mm
54" 1370mm	MEP35E	MEP55E	MEP55E	54" 1370mm	(2) MEP35E	(1) MEP35E (1) MEP55E	(2) MEP55E	(2) MEP35E (1) MEP55E	(1) MEP35E (2) MEP55E	(3) MEP55E	(1) MEP35E (3) MEP55E
63" 1600mm	MEP36E	MEP56E	MEP56E	63" 1600mm	(2) MEP36E	(1) MEP36E (1) MEP56E	(2) MEP56E	(2) MEP36E (1) MEP56E	(1) MEP36E (2) MEP56E	(3) MEP56E	(1) MEP36E (3) MEP56E
74" 1880mm	MEP37E	MEP57E	MEP57E	74" 1880mm	(2) MEP37E	(1) MEP37E (1) MEP57E	(2) MEP57E	(2) MEP37E (1) MEP57E	(1) MEP37E (2) MEP57E	(3) MEP57E	(1) MEP37E (3) MEP57E

## For Best Performance

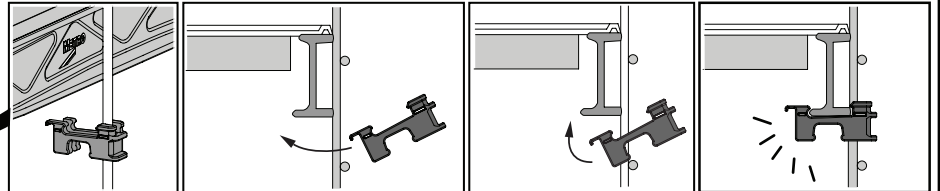
1. Use (6) mounting clips per panel
2. Mount the clips to the enclosure panel along the highlighted vertical wires when possible.
3. Mount (2) clips near the top of the unit, (2) near the middle, and (2) within the bottom third of the unit.
4. Mount (2) clips at the same shelf level position (as shown)



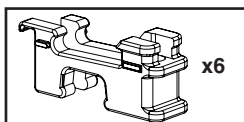
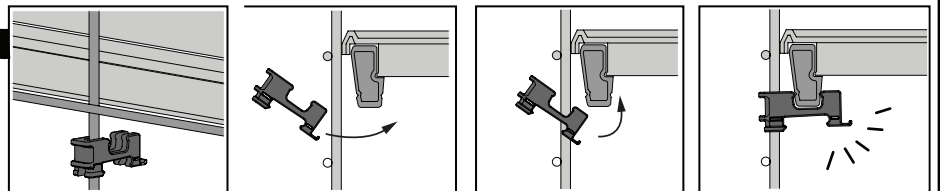
## MetroMax® i



### For the shelf ends



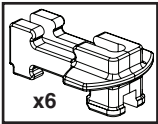
### For the back of the shelf



x6

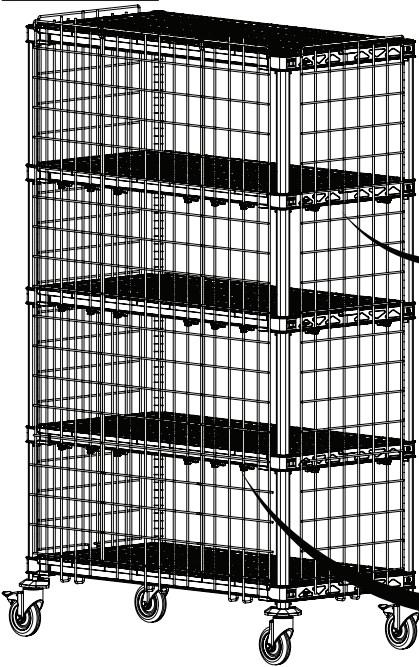
MetroMax i  
 mounting clip  
 Replacements:  
 RPMX3-RODTAB

# MetroMax<sup>®</sup> 4

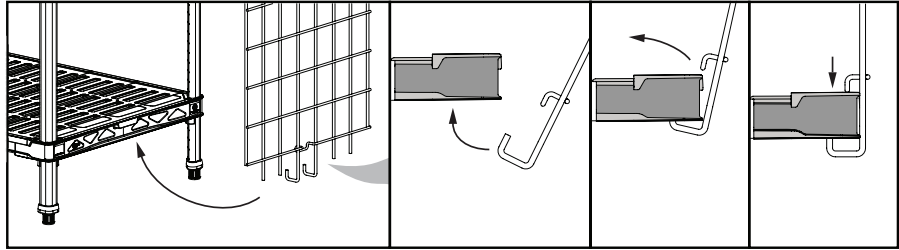


x6

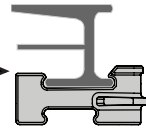
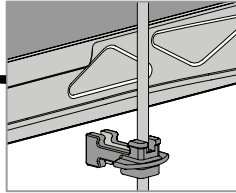
MetroMax 4 mounting clip  
Replacements:  
RPMX4-RODTAB



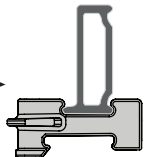
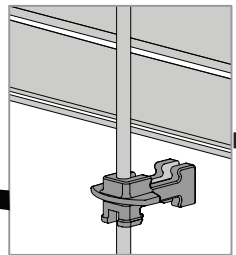
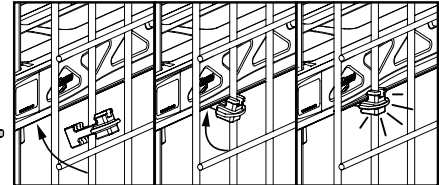
## Bottom shelf / Étagère Inférieure / Estante Inferior



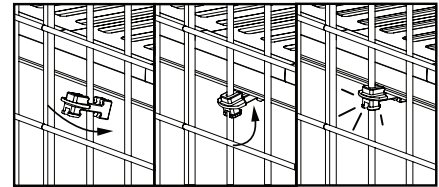
MOUNTING CLIP - UPPER SHELVES  
BRIDE DE MONTAGE - ÉTAGÈRES SUPÉRIEURES  
PRESILLA DE MONTAJE - ESTANTES SUPERIORES



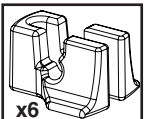
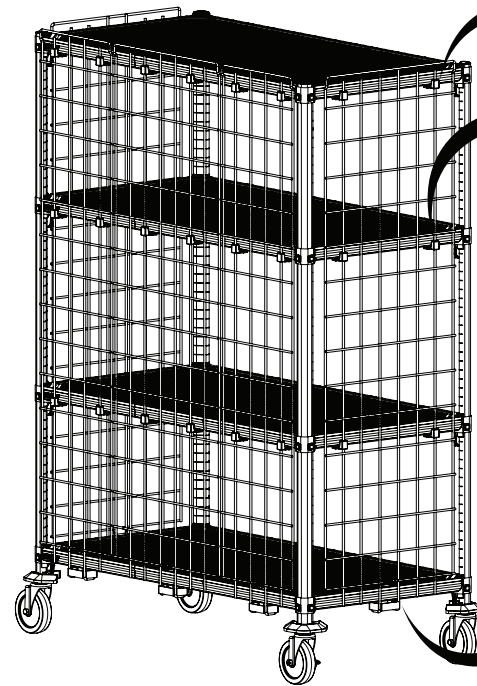
For the shelf ends



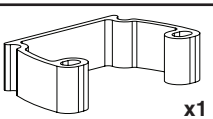
For the back of the shelf



# MetroMax<sup>®</sup> Q



x6



x1

MetroMax Q mounting clip and adapter  
Replacements: RPMQ3-RODTAB

