

Thread Adapter for Containers

If it doesn't fit - we'll make it fit.

Our numerous thread adapters are well-proven assistants through the daily working routine in laboratory and production.



Online configurator!

You can easily find the right adapter using the configurator at www.scat-europe.com. Products > Accessories > Thread adapter. Or simply scan the QR code.

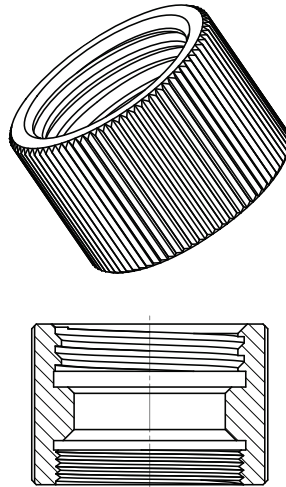
FILTER

Main material	▼	Electrostatic conductive plastic	▼
Thread size	▼	Thread on top	▼
Thread bottom	▼		

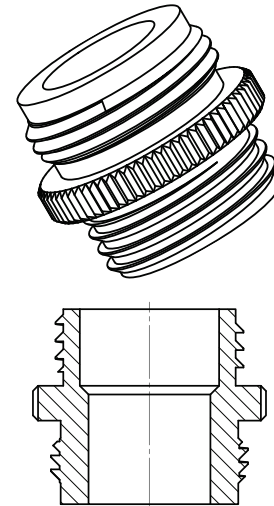


www.scat-europe.com

A Internal Thread (f)

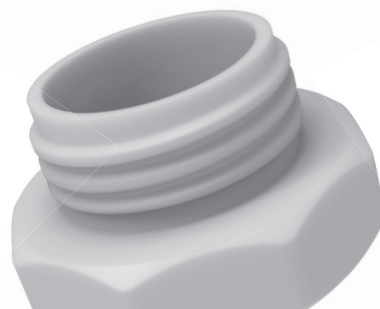
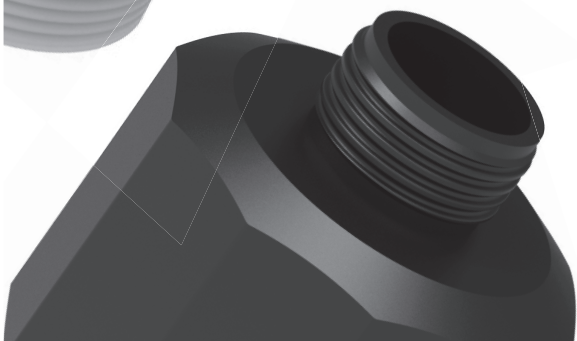


B External Thread (m)



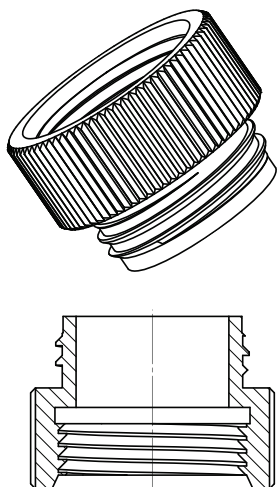
Typ	Part No.	Thread 1	Thread 2	Material	Colour
A	107 024	S 55 (f)	R 2" fine (f)	PP	Green
A	107 023	S 60/61 (f)	R 2" fine (f)	PP	Yellow
A	108 444	63 mm ASTM (f)	R 2" fine (f)	PP	White
A	107 025	S 70/71 (f)	R 2" fine (f)	PP	Brown

Typ	Part No.	Thread 1	Thread 2	Material	Colour
B	107 014	GL 45 (m)	R 2" BSP (m)	PP	Colourless
B	107 016	GL 45 (m)	R 2" BSP (m)	PTFE	White
B	107 015	GL 45 (m)	2" Tri-Sure (m)	PP	Colourless
B	107 017	GL 45 (m)	2" Tri-Sure (m)	PTFE	White
B	108 022	S 60/61 (m)	2" BSP (m)	PP	Black
B	108 029	S 60/61 (m)	2" Tri-Sure (m)	PP	Colourless



Thread Adapter for Containers

C Internal/external thread (f/m)



C 108 058

The angled-adapter for canisters.

Compensates for sloping canister openings. Place laboratory bottles simply and safely on the sieve of the funnel and let them drain.



Typ	Part No.	Thread 1	Thread 2	Material	Colour
C	108 060	S 40 (m)	GL 45 (f)	PTFE	White
C	107 996	GL 45 (m)	GL 32 (f)	PP	Colourless
C	107 993	GL 45 (m)	GL 32 (f)	PTFE	White
C	107 995	GL 45 (m)	GL 38 (f)	PP	Colourless
C	107 992	GL 45 (m)	GL 38 (f)	PTFE	White
C	107 994	GL 45 (m)	S40 / GL 40 (f)	PP	Colourless
C	107 991	GL 45 (m)	S40 / GL 40 (f)	PTFE	White
C	107 093	GL 45 (m)	S 51 (f)	PP	Colourless
C	107 099	GL 45 (m)	S 55 (f)	PP	Colourless
C	107 090	GL 45 (m)	S 60/61 (f)	PP	Colourless
C	107 079	GL 45 (m)	S 70/71 (f)	PP	Colourless
C	117 030	GL 45 (m)	38 / 430	PTFE	White
C	107 028	GL 45 (m)	R 1 1/2" (f)	PP	Colourless
C	107 080	S 51 (m)	S 47 x 4 (f)	PP	Colourless
C	107 092	S 51 (m)	S 55 (f)	PP	Colourless
C	107 086	S 51 (m)	S 60/61 (f)	PP	Colourless
C	107 078	S 55 (m)	S40 / GL 40 (f)	PP	Colourless
C	117 091	S 55 (m)	S40 / GL 40 (f)	PTFE	White
C	107 084	S 55 (m)	S 50 (f)	PTFE	Colourless
C	107 095	S 55 (m)	S 51 (f)	PP	Colourless
C	117 095	S 55 (m)	S 51 (f)	PTFE	White
C	107 094	S 55 (m)	GL 45 (f)	PP	Colourless
C	117 094	S 55 (m)	GL 45 (f)	PTFE	White
C	107 089	S 55 (m)	S 60/61 (f)	PP	Colourless
C	108 058	S 60/61 (m) angled	S 60/61 (f)	PE-HD-EL	Black
C	108 145	S 60/61 (m)	S 50 (f)	PE-HD-EL	Black
C	107 097	S 60/61 (m)	S 51 (f)	PTFE	Colourless
C	108 146	S 60/61 (m)	S 51 (f)	PE-HD-EL	Black
C	107 096	S 60/61 (m)	S 55 (f)	PP	Colourless
C	108 021	S 60/61 (m)	2" BSP (f)	PP	Grey
C	107 091	S 60/61 (m)	B 63 (f)	PP	Colourless
C	107 074	S 60/61 (m)	S 65 (f)	PP	Colourless
C	107 026	S 60/61 (m)	R 3" Schütz coarse (f)	PP	Grey
C	107 027	S 60/61 (m)	R 3" Werit fine (f)	PP	Colourless
C	107 088	S 65 (m)	63 mm ASTM (f)	PP	Colourless
C	108 147	S 60/61 (m)	S 71 (f)	PE-HD-EL	Black
C	107 018	S 90 (m)	S 100 / BB 70 (f)/VIR	PE-HD	Colourless
C	107 085	R 1 1/2" (m)	GL 45 (f)	PP	Colourless
C	107 021	BCS 70x6 (m)	R 2" fine (f)	PP	Blue
C	107 022	BCS 56x4 (m)	R 2" fine (f)	PP	Orange